



since 1946

Ernest Fleming
machinery & equipment pty ltd

Website: www.fleming.com.au

Phone: (+61) 02 9427 3270

Email: sales@fleming.com.au

Address: 7/27 Mars Rd, Lane Cove West, Sydney NSW 2066 Australia

Flamingo Turbine Mill

EFTM Turbine mills are used for pharmaceutical, food and chemical industry milling various type of materials with range of characteristics, hardness and fiber.

It gives effective pulverization results on many material, especially herbs and fibrous materials.

Working Principle:

The material is fed into the pulverizer chamber and ground by the rotating attrition head. The fineness of the resulting powder is controlled by the adjustment of the gap between gear and impact ring assembly of the unit.

Also, the units can be supplied with Air cooling system or without screen as request.

Qualified material transfers to the receiving cyclone and filter collector for discharge. All contact parts are made of stainless steel.

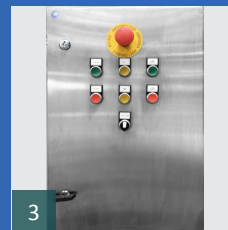
Suitable for:

- Fertilizers
- Chemicals
- Detergents
- Pigments
- Minerals
- Clays
- Food
- etc...

Features:

- Operator Friendly
- Simple Structure
- High Capacity
- Lower Noise
- Stainless Steel design
- No dust rise when running

EFTM-18



Specifications

Capacity	Kg/hr	10-50
Spindle Speed	rpm	6000
Result Fineness	mm	60-120
Max Feed Size	mm	6
Machine Power	kW	2.2
Overall Height	mm	850
Overall Length	mm	550
Overall Width	mm	400
Overall Weight	Kg	85

* Please confirm specifications on order as features may change



since 1946

Ernest Fleming
machinery & equipment pty ltd

Website: www.fleming.com.au

Phone: (+61) 02 9427 3270

Email: sales@fleming.com.au

Address: 7/27 Mars Rd, Lane Cove West, Sydney NSW 2066 Australia

Flamingo Turbine Mills

EFTM Turbine mills are used for pharmaceutical, food and chemical industry milling various type of materials with range of characteristics, hardness and fiber.

It gives effective pulverization results on many material, especially herbs and fibrous materials.

Working Principle:

The material is fed into the pulverizer chamber and ground by the rotating attrition head. The fineness of the resulting powder is controlled by the adjustment of the gap between gear and impact ring assembly of the unit.

Also, the units can be supplied with Air cooling system or without screen as request.

Qualified material transfers to the receiving cyclone and filter collector for discharge. All contact parts are made of stainless steel.

Suitable for:

- Fertilizers
- Chemicals
- Detergents
- Pigments
- Minerals
- Clays
- Food
- etc...

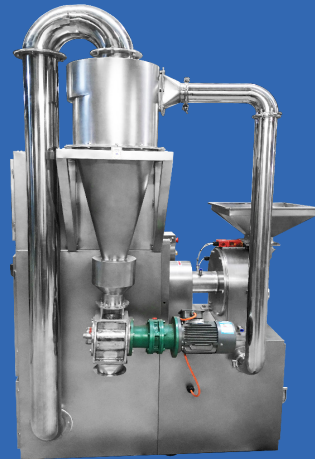
Features:

- Operator Friendly
- Simple Structure
- High Capacity
- Lower Noise
- Stainless Steel design
- No dust rise when running

EFTM-30



EFTMF-40



	Unit	EFTM-18	EFTM-20	EFTM-30	EFTM-40	EFTM-60	EFTM-80	EFTM-100
Capacity	Kg/hr	10-50	60-150	100-300	160-800	300-1000	400-2000	500-3000
Spindle Speed	rpm	6000	4500	3800	3400	2800	2000	1500
Result Fineness	mm	60-120	40-120	40-120	40-120	40-120	40-120	40-120
Max Feed Size	mm	6	6	6	10	12	12	12
Machine Power	kW	2.2	4	5.5	7.5	15	22	30
Overall Height	mm	850	1250	1450	1550	1880	1960	2100
Overall Length	mm	550	550	600	800	900	1100	1350
Overall Width	mm	400	600	700	900	900	950	1000
Overall Weight	Kg	85	180	250	360	550	850	1200

* Please confirm specifications on order as features may change



since 1946

Ernest Fleming
machinery & equipment pty ltd

Website: www.fleming.com.au

Phone: (+61) 02 9427 3270

Email: sales@fleming.com.au

Address: 7/27 Mars Rd, Lane Cove West, Sydney NSW 2066 Australia

Flamingo Turbine Mill with Cyclone

EFTM Turbine mills are used for pharmaceutical, food and chemical industry milling various type of materials with range of characteristics, hardness and fiber.

It gives effective pulverization results on many material, especially herbs and fibrous materials.

Working Principle:

The material is fed into the pulverizer chamber and ground by the rotating attrition head. The fineness of the resulting powder is controlled by the adjustment of the gap between gear and impact ring assembly of the unit.

Also, the units can be supplied with Air cooling system or without screen as request.

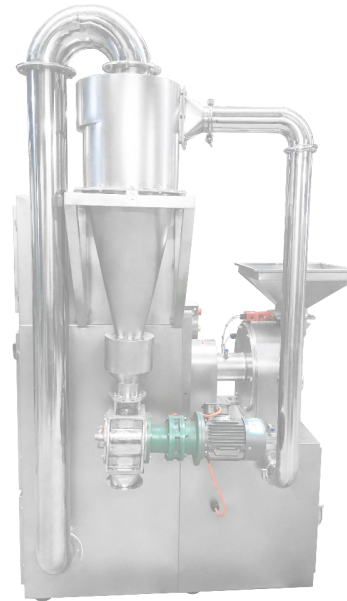
Qualified material transfers to the receiving cyclone and filter collector for discharge. All contact parts are made of stainless steel.

Suitable for:

- Fertilizers
- Chemicals
- Detergents
- Pigments
- Minerals
- Clays
- Food
- etc...

Features:

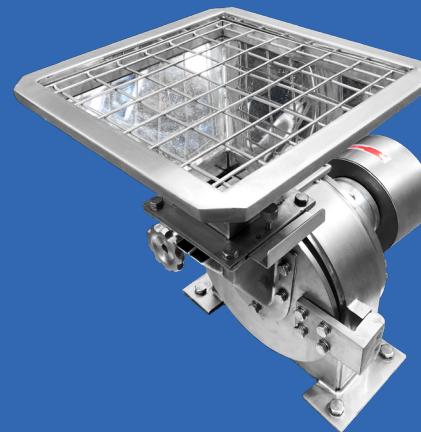
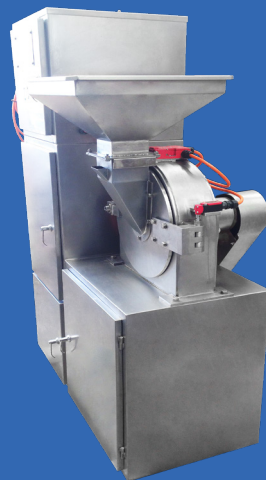
- Operator Friendly
- Simple Structure
- High Capacity
- Lower Noise
- Stainless Steel design
- No dust rise when running



EFTMF-40



EFTM-30



	Unit	EFTMF-20	EFTMF-30	EFTMF-40
Capacity	Kg/hr	10-50	30-120	50-180
Spindle Speed	rpm	5000	4500	4000
Result Fineness	mm	60-260	50-260	20-260
Max Feed Size	mm	<12	<12	<15
Machine Power	kW	5.5	7.5	11
Overall Height	mm	1250	1450	1550
Overall Length	mm	550	600	800
Overall Width	mm	600	700	900
Overall Weight	Kg	180	250	360

* Please confirm specifications on order as features may change