



since 1946

Ernest Fleming
machinery & equipment pty ltd

Website: www.fleming.com.au

Phone: (+61) 02 9427 3270

Email: sales@fleming.com.au

Address: 7/27 Mars Rd, Lane Cove West, Sydney NSW 2066 Australia

EFT-J1000

Flamingo Electrically Heat, Jacketed Tank

Flamingo EFT-J Water/Oil Jacketed Tanks are electrically heated, Non-Pressure rated tanks and are available as a standard model or can be fabricated to customer specification on request.

EFT-J vessels are suitable for heating or cooling with side and bottom-scraper agitation for non-stick, even mixing and temperature distribution.

Available in Stainless steel Grade #304 or #316 Stainless Steel (optional) and suitable for a vast range of applications in the food, pharmaceutical, cosmetic and chemical industries.

* Please confirm specifications on order as features may change

The Jackets and tanks are not pressure rated.

Features:

- Water/Oil Jacketed for Heating or Cooling
- Electrically Heated
- 2 inch – 2.5 inch Cone bottom outlet (or to customer request)
- Slow speed Gate-Stirrer with Bottom & Side Teflon scrapers
- Motor drive with slow speed gearbox
- Twin Split Lids

Benefits

- Slow speed Gate stirrer with side and bottom Teflon scrapers (variable speed is available).
- Suitable creams, lotions, hair conditioner, food sauces, chutneys and jams
- Teflon side and bottom scrape mixing vessel to prevent sticking and burning.
- 10000L (2.5mm skin thickness/ 2.5mm jacket thickness)
- Thermostat and Temperature controls, corresponding thermostats to ensure accurate product temperature stability (enquire for more information)
- Two thermo-couple positions for small and maximum volumes.
- Water to 90 degC/oil jacketed 120 deg C with electric heating
- Sight-glass / dip stick for level indication.
- Cone bottom fully welded with a radius weld for hygienic application.
- Safety Grids for safety and easy loading of materials.
- removable heating elements (up to 24kW) when jacket empty
- Electric motor with right-angle Gearbox or to customer request
- Easily connected to Flamingo Emulsifiers for re-circulation or pumping and/or Fillers.
- Can be supplied with Castors and/or Fork Lift Pads



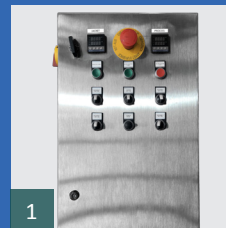
Optional



Batch Weight Scale Indicator



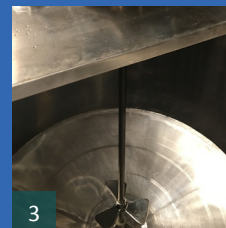
Variable Speed Mixing Function



1



2



3



4

Specifications

| | | |
|--------------------------------|-----|-------------|
| tank size | mm | 1150d,1050h |
| voltage | V | 415 |
| capacity | l | 1000 |
| rotating speed | rpm | 25 |
| heating power | kW | 12-24 |
| stirring power | kW | 2.2 |
| recirculation power (optional) | kW | 0.37 |
| width | mm | 1150 |
| height | mm | 1600 |
| length | mm | 1350 |
| weight | kg | 350 |

* Please confirm specifications on order as features may change

EFT2-J60

Flamingo Electrically Heat, Jacketed Tank



| | | |
|--------------------------------|-----|-----------|
| tank size | mm | 400d,500h |
| voltage | V | 240 |
| capacity | l | 60 |
| rotating speed | rpm | 60 |
| heating power | kW | 12-24 |
| stirring power | kW | 0.55 |
| recirculation power (optional) | kW | 0.37 |
| width | mm | 400 |
| height | mm | 1100 |
| length | mm | 600 |
| weight | kg | 45 |

** Please confirm specifications on order as features may change*

EFT2-J200

Flamingo Electrically Heat, Jacketed Tank with Clamp-on Stirrer



| | | |
|--------------------------------|-----|-----------|
| tank size | mm | 670d,640h |
| voltage | V | 415 |
| capacity | l | 200 |
| rotating speed | rpm | 60 |
| heating power | kW | 12-24 |
| stirring power | kW | 1.5 |
| recirculation power (optional) | kW | 0.37 |
| width | mm | 670 |
| height | mm | 1270 |
| length | mm | 870 |
| weight | kg | 100 |

** Please confirm specifications on order as features may change*

EFT2-J300

Flamingo Electrically Heat, Jacketed Tank



| | | |
|--------------------------------|-------|-----------|
| tank size | mm | 780d,670h |
| voltage | V | 415 |
| capacity | l | 300 |
| rotating speed | r/min | 60/1 |
| heating power | kW | 12-24 |
| stirring power | kW | 1.5 |
| recirculation power (optional) | kW | 0.37 |
| width | mm | 800 |
| height | mm | 1270 |
| length | mm | 1000 |
| weight | kg | 180 |

** Please confirm specifications on order as features may change*

EFT2-J2000

Flamingo Electrically Heat, Jacketed Tank



| | | |
|--------------------------------|-----|-------------|
| tank size | mm | 1450d,1050h |
| voltage | V | 415 |
| capacity | l | 2000 |
| rotating speed | rpm | 60 |
| heating power | kW | 12-24 |
| stirring power | kW | 4 |
| recirculation power (optional) | kW | 0.37 |
| width | mm | 1450 |
| height | mm | 1600 |
| length | mm | 1650 |
| weight | kg | 750 |

** Please confirm specifications on order as features may change*