





if ONE can do it all...



ANSER X1

Redefining Your Standard for
Industrial Coding

ANSER NexGen Coding Technology

*ANSER X1 features our NexGen Coding Technology, designed to **drive all thermal inkjet cartridges**, giving you complete solution for all coding requirements*



CODING JUST GOT EASY

Robustness Beyond Ordinary Standard

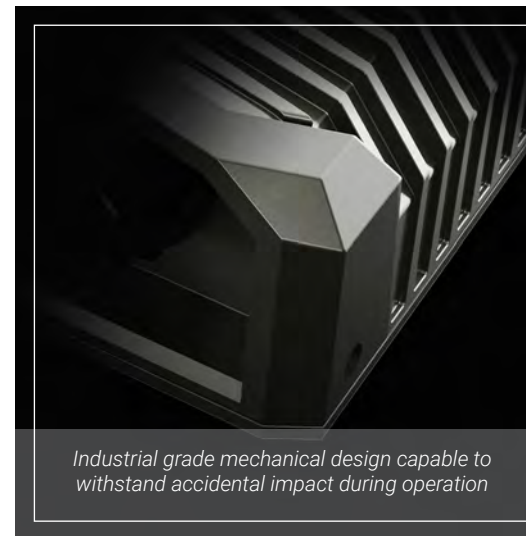
X1 is meant to redefine your expectation of industrial printer, by providing you complete robustness and reliability even under the most crucial working environment



Industrial grade cable withstanding up to 30kg of pull-force, preventing accidental cable disconnection



Scratch resistant and glove operational, yet smartphone-like sensitive touch screen



Industrial grade mechanical design capable to withstand accidental impact during operation



Cooling fin design to ensure reliable coding at high temperature environment

IP66 comes as standard

*Total dust ingress protection,
and capable to withstand
high pressure water jet during
production washdown*



Any Body Can Do


X1 user-interface design is not only user friendly, but intuitive. User training requirement and operation mistakes can be non-existence




CODING JUST GOT EASY

Simple yet Powerful

X1 features powerful customizable access control & status monitoring system, which provides you the ability to prevent human operation errors

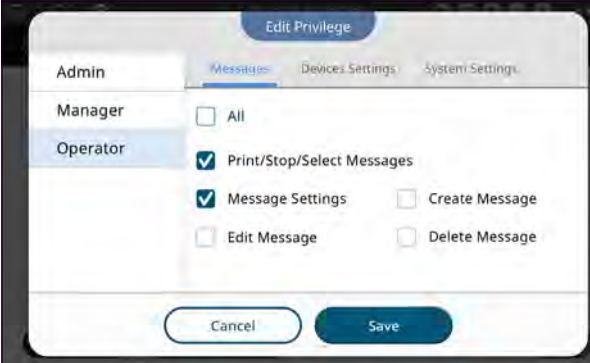


Real-Time Monitoring & Alert
Customizable display dashboard, with preventive notification feature to avoid production downtime



Status	Production Counter	Delay	Printing Speed	Printables	
PL1	Stitch	66,789	50mm	76.2m/min	Printhead-1 883 Printhead-2 560
Single	25,792	50mm	76.2m/min	Printhead-3 883	
PL2	Single	2,000	53mm	50.9m/min	Printhead-4 760
Single	25,792	80mm	70.8m/min	Printhead-5 900	

Dual-Production Line Control
Control & monitor 2 production lines simultaneously with ease



User Management System
Customizable user access level control, to reduce and eliminate operational mistakes



Date	Printhead-1 (ml)	Printhead-2 (ml)
2019.07.05	364	875
2019.07.06	1653	1000
2019.07.07	1478	732
2019.07.08	347	1500
2019.07.09	843	1385
2019.07.10	500	1500
2019.07.11	745	1388

Production & Ink Analysis Report
Informative production summary report for production verification and ink consumption analysis

1 Printer

2 Production Lines

X1 is capable of controlling 2 different production lines simultaneously, providing you operational efficiencies and cost saving advantages



if ONE can do it all...



High-Speed Coding
300m/min high resolution coding



Large-Image Coding
2-inch print height



Non-Contact Coding
12mm printing distance



Non-Stop Coding
Cartridge replacement without downtime

Powerful Ink Portfolio for All Your Substrate Requirements

ANSER NexGen Coding Technology provides versatile ink selection driven by multiple TIJ cartridges, from general purpose to specialty inks to meet your industry requirements



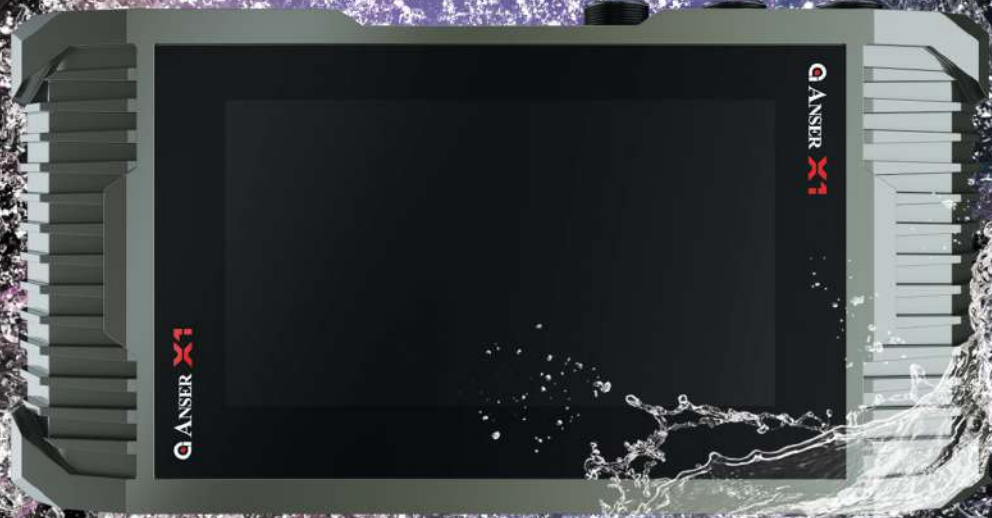


Specification-Controller

Maximum number of printhead	2	Communication Protocols	TCP IP/UDP, Modbus TCP, and ANSER U2 Net protocol
Display	7" Color LCD Capacitive Touchscreen (800x480 px) (Compatible with most medical & industrial gloves)	Power Input	AC 100V-240V, 50/60Hz (90Watt)
Printing Functions	Static Data: Text, Logo, Dynamic Data: String, Shift, Counter, Production Date, Expiration Date	I/O Ports	USB 2.0 connector x 2 RS-485 & RS-232 connector x 1 RJ-45 connector x 1 Digital I/O connector (1 IN & 5 OUT pins) Encoder x 1 Photocell x 1
Fonts & Size	Standard: Arial, Other Ture Type Fonts can be loaded		
System Language (add input lang.)	English, Spanish, German, French, Italian, Traditional Chinese, Simplified Chinese, Japanese, Korean, Russian, Portuguese, Turkish, Hungarian, Slovak, Czech, Swedish, Romanian, Serbian, Bulgarian, Polish	Barcode Type	EAN8, EAN13, EAN14, EAN128, UPCA, UPCE, CODE39, CODE128, ITF14 (SCC-14), NVE18 (SSCC-18), INTER25, CODABAR, PDF417, DATAMATRIX, QR CODE, GS1 (DATAMATRIX, DATABAR EXP, DATABAR, QR CODE), D'MATRIX 8x32, DUN14, Aztec Code
Dimensions & Weight	291 x 142 x 52mm / 2.12 Kg	Operating RH.	0%-90%, Non-condensing
Operating Temp.	0-40 Celsius	IP Rating	IP66 housing

Specification-Printhead Type H

Printing Technology	High Resolution Thermal Ink Jet	Operating Temp.	0~40 Celsius
Print Height	Single Print Head: 12.7mm (0.5 inch) or 25.4mm (1.0 inch)	Operating RH.	0% ~ 90%, Non-condensing
	Stitch Print Head: 12.7mm x 2 @ 25.4mm (1.0 inch) 25.4mm x 2 @ 50mm (1.97 inch)	Dimensions & Weight	82 x 30 x 210 mm / 0.46kg
Printing Resolution	600 x 600 DPI	Printhead Cables	Standard: 2M Optional: 5M, 10M, 15M
Printing Speed	30m/min @ 600 DPI 300m/min @ 60 DPI		
Printing Distance	6 mm		



Whatever they can do,
I can do better...

ANSER

www.anser-coding.com